

## PRODUCTS

DISCOVER THE FUTURE OF SUSTAINABLE BUILDING WITH TROX



### EPDS FROM TROX

The importance of sustainability in our lives and the role of environmentally friendly products is undisputed. TROX takes you into a new era of building with Environmental Product Declarations (EPDs). Learn all about the eco-labelling of products at TROX, from the importance to the benefits of EPDs, and how they can have a lasting impact on your purchasing behaviour.

### X-CUBE COMPACT

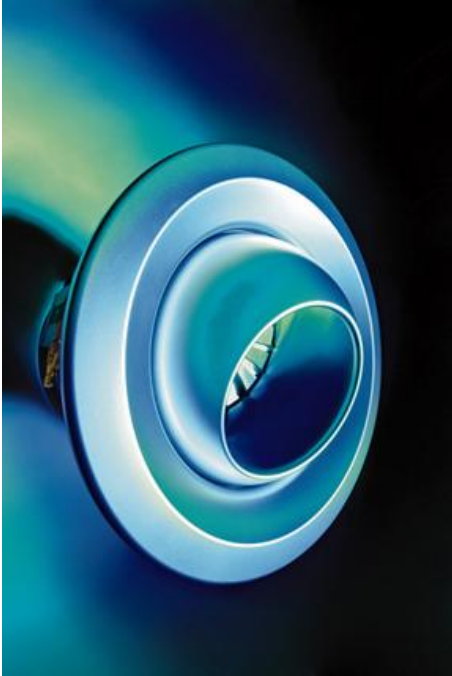


#### COMPACT AND EFFICIENT.

The X-CUBE compact combines the high quality features of the X-CUBE technology in the smallest space. Compact and efficient. Pre-configured and ready for connection

A total of nine units in power range from 600 to 6.000m<sup>3</sup> / h with two different systems for heat exchange offer ideal solutions for small and midrange applications. A wide range of accessories completes the range from simple air heater on combined heating-/cooling coils up to steam humidification module for maximum comfort.

### TJN JET NOZZLE

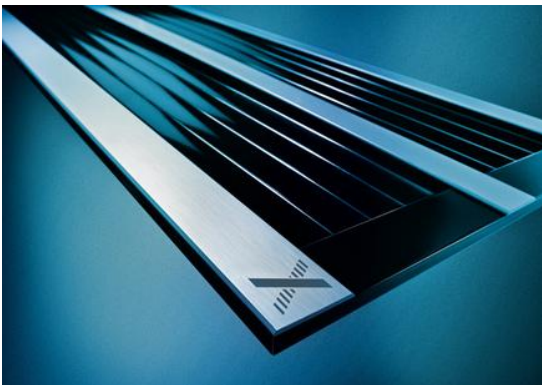


#### ACOUSTICALLY AND TECHNICALLY OPTIMISED.

The new product type is not only aesthetically attractive but also more energy efficient; plus it offers improved acoustic properties.

- Up to 6 dB less noise than with DUK jet nozzles due to optimised nozzle contours
- Jet angle can be adjusted, limited, and fixed
- Two-step reduction of the discharge range for smaller spaces
- High-grade polymer in RAL white aluminium or pure white
- Simple installation due to bayonet fixing at the discharge ring
- Self-adjusting variant with short response time due to actuator made of shape memory alloy
- Flat external motor ensures compact installation and increased energy efficiency
- Integration with measurement and control system is possible
- Five sizes, each available for duct (rectangular or circular) or direct connection
- All variants are also available with outer casing for visible areas

#### X-GRILLE



## AESTHETIC AND FUNCTIONAL.

The new ventilation grilles X-Grille Cover are made of high quality aluminium and connect function and aesthetic in one perfect shaped design. The integration ensued in walls, ceilings or air ducts.

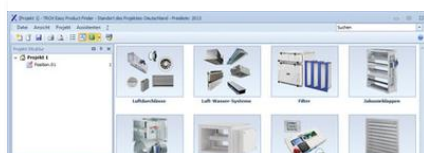
- Energy-efficient and acoustically optimised air distribution
- Symmetric blade profile for two-way entry flow
- Uniform look and easy adjustment due to concealed blade linkage
- Concealed and improved mounting bracket
- Linear look, ideal for arrangement
- Easy exchangeable cover plates allow for a lively two colour look
- Use of existing attachment kits
- Easy replacement due to standard installation dimensions

## TROX SERVICES



### RODUCTSEARCH A-Z

nd out quickly and  
mply.



### TROX EASY PRODUCT FINDER

Fast. Reliable. Innovative.



### TROX FIRE DAMPER POSTER

The right fire damper every  
time.